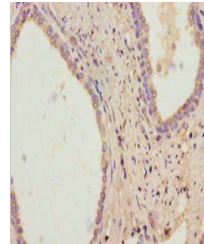


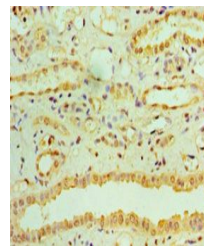
Product Datasheet

Retinol dehydrogenase 11 antibody (orb240327)

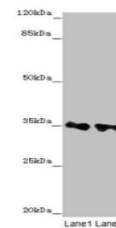
Description	Retinol dehydrogenase 11 antibody
Species/Host	Rabbit
Reactivity	Human
Conjugation	Unconjugated
Tested Applications	ELISA, IHC, WB
Immunogen	Recombinant Human Retinol dehydrogenase 11 protein (22-318AA)
Target	RDH11
Preservatives	Preservative: 0.03% Proclin 300. Constituents: 50% Glycerol
Form/Appearance	Liquid
Storage	Maintain refrigerated at 2-8°C for up to 2 weeks. For long term storage store at -20°C in small aliquots to prevent freeze-thaw cycles.
Note	For research use only
Isotype	IgG
Clonality	Polyclonal
Uniprot ID	Q8TC12
Dilution Range	WB:1:1000-1:5000, IHC-P:1:20-1:200
Expiration Date	12 months from date of receipt.



Immunohistochemical staining of human prostate tissue



Immunohistochemical staining of human kidney tissue



Western blot analysis of PC-3 whole cell lysate