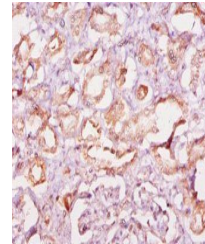


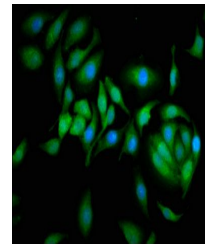
Product Datasheet

Calpastatin antibody (orb240231)

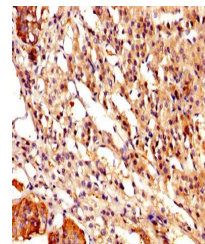
Description	Calpastatin antibody
Species/Host	Rabbit
Reactivity	Human, Mouse
Conjugation	Unconjugated
Tested Applications	ELISA, IF, IHC, WB
Immunogen	Recombinant Human Calpastatin protein (1-667AA)
Target	CAST
Preservatives	Preservative: 0.03% Proclin 300. Constituents: 50% Glycerol
Form/Appearance	Liquid
Storage	Maintain refrigerated at 2-8°C for up to 2 weeks. For long term storage store at -20°C in small aliquots to prevent freeze-thaw cycles.
Note	For research use only
Isotype	IgG
Clonality	Polyclonal
Uniprot ID	P20810
Dilution Range	WB:1:1000-5000, IHC-P:1:10-500, IF:1:50-200
Expiration Date	12 months from date of receipt.



Immunohistochemical staining of human kidney tissue.



Immunofluorescence analysis of A549 cells.



Immunohistochemical staining of human adrenal gland tissue.