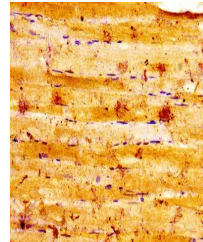


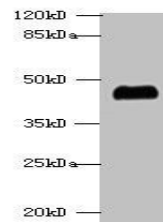
Product Datasheet

Fructose-bisphosphate aldolase A antibody (orb239924)

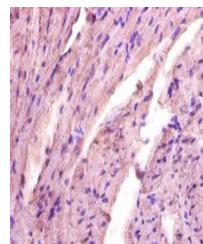
Description	Fructose-bisphosphate aldolase A antibody
Species/Host	Rabbit
Reactivity	Human, Rat
Conjugation	Unconjugated
Tested Applications	ELISA, IHC, WB
Immunogen	Recombinant Human Fructose-bisphosphate aldolase A protein (2-364AA)
Target	Hemoglobin
Preservatives	Preservative: 0.03% Proclin 300. Constituents: 50% Glycerol
Form/Appearance	Liquid
Storage	Maintain refrigerated at 2-8°C for up to 2 weeks. For long term storage store at -20°C in small aliquots to prevent freeze-thaw cycles.
Note	For research use only
Isotype	IgG
Clonality	Polyclonal
Uniprot ID	P04075
Dilution Range	WB:1:500-5000, IHC-P:1:20-200, IF:1:50-200, IP:1:200-2000
Expiration Date	12 months from date of receipt.



Immunohistochemistry of paraffin-embedde...



Western blot aanalysis of EC109 whole ce...



Immunohistochemistry of paraffin-embedde...