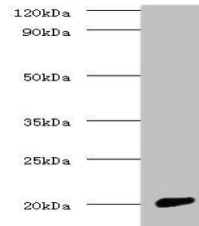


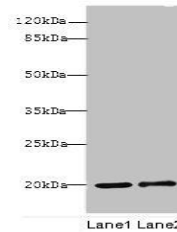
Product Datasheet

Cytochrome C antibody (orb239876)

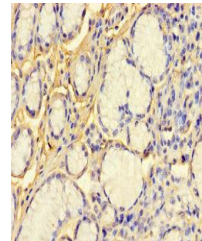
Description	Cytochrome C antibody
Species/Host	Rabbit
Reactivity	Human, Rat, Zebrafish
Conjugation	Unconjugated
Tested Applications	ELISA, IHC, WB
Immunogen	Recombinant Human Cytochrome c oxidase subunit 4 isoform 1, mitochondrial protein (23-169AA)
Target	COX4I1
Preservatives	Preservative: 0.03% Proclin 300. Constituents: 50% Glycerol
Form/Appearance	Liquid
Storage	Maintain refrigerated at 2-8°C for up to 2 weeks. For long term storage store at -20°C in small aliquots to prevent freeze-thaw cycles.
Note	For research use only
Isotype	IgG
Clonality	Polyclonal
Uniprot ID	P13073
Dilution Range	WB:1:1000-5000, IHC-P:1:20-200
Expiration Date	12 months from date of receipt.



Western blot analysis of rat brain tissue...



Western blot analysis of Rats muscle tissue...



Immunohistochemical staining of human gastric tissue...