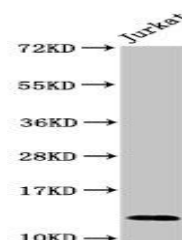


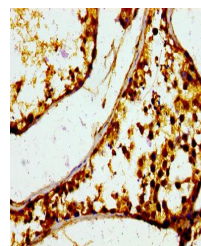
Product Datasheet

MIF antibody (orb239634)

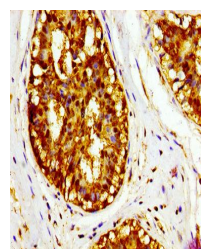
Description	MIF antibody
Species/Host	Rabbit
Reactivity	Human, Mouse, Rat
Conjugation	Unconjugated
Tested Applications	ELISA, IF, IHC, WB
Immunogen	Recombinant Human Macrophage migration inhibitory factor protein (2-115AA)
Target	MIF
Preservatives	Preservative: 0.03% Proclin 300. Constituents: 50% Glycerol
Form/Appearance	Liquid
Storage	Maintain refrigerated at 2-8°C for up to 2 weeks. For long term storage store at -20°C in small aliquots to prevent freeze-thaw cycles.
Note	For research use only
Isotype	IgG
Clonality	Polyclonal
Uniprot ID	P14174
Dilution Range	WB:1:500-1:5000, IHC-P:1:200-1:500, IF:1:50-1:200
Expiration Date	12 months from date of receipt.



Western blot analysis of Jurkat whole ce...



Immunohistochemical staining of human te...



Immunohistochemical staining of human br...