

Product Datasheet

High affinity immunoglobulin epsilon R subunit gamma antibody (orb239509)

Description High affinity immunoglobulin epsilon R subunit gamma antibody

Species/Host Rabbit

Reactivity Human

Conjugation Unconjugated

Tested Applications ELISA, IF, IHC

Immunogen Recombinant Human High affinity immunoglobulin epsilon receptor subunit gamma protein (19-86AA)

Target FCER1G

Preservatives Preservative: 0.03% Proclin 300. Constituents: 50% Glycerol

Form/Appearance Liquid

Storage Maintain refrigerated at 2-8°C for up to 2 weeks. For long term storage store at -20°C in small aliquots to prevent freeze-thaw cycles.

Note For research use only

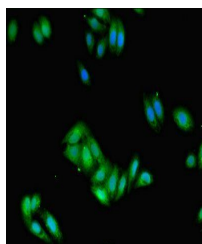
Isotype IgG

Clonality Polyclonal

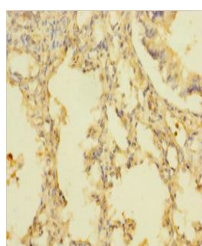
Uniprot ID **P30273**

Dilution Range IHC-P:1:20-1:200, IF:1:50-1:200

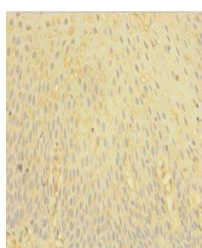
Expiration Date 12 months from date of receipt.



Immunofluorescence analysis of HepG2 cel...



Immunohistochemical staining of human lu...



Immunohistochemical staining of human to...