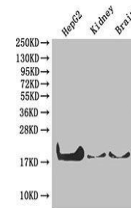


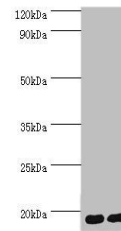
Product Datasheet

Peptidyl-prolyl cis-trans isomerase A antibody (orb239388)

Description	Peptidyl-prolyl cis-trans isomerase A antibody
Species/Host	Rabbit
Reactivity	Human, Mouse
Conjugation	Unconjugated
Tested Applications	ELISA, WB
Immunogen	Recombinant Human Peptidyl-prolyl cis-trans isomerase A protein (1-165AA)
Target	PPIA
Preservatives	Preservative: 0.03% Proclin 300. Constituents: 50% Glycerol
Form/Appearance	Liquid
Storage	Upon receipt, store at -20°C or -80°C. Avoid repeated freeze.
Note	For research use only
Isotype	IgG
Clonality	Polyclonal
Uniprot ID	P62937
Expiration Date	12 months from date of receipt.



Western blot analysis of HepG2 cell, Mo...



Western blot analysis of 293T whole cel...