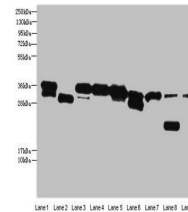


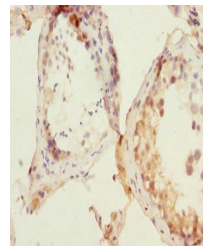
## Product Datasheet

# DNA-(apurinic or apyrimidinic site) lyase antibody (orb239171)

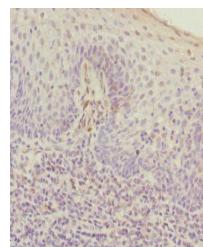
|                            |   |
|----------------------------|---|
| <b>Description</b>         | DNA-(apurinic or apyrimidinic site) lyase antibody  |
| <b>Species/Host</b>        | Rabbit  |
| <b>Reactivity</b>          | Human, Mouse  |
| <b>Conjugation</b>         | Unconjugated  |
| <b>Tested Applications</b> | ChIP, ELISA, IHC, WB  |
| <b>Immunogen</b>           | Recombinant Human DNA-(apurinic or apyrimidinic site) lyase protein (32-318AA)  |
| <b>Target</b>              | Pollen allergen Phl p 5b  |
| <b>Preservatives</b>       | Preservative: 0.03% Proclin 300.<br>Constituents: 50% Glycerol  |
| <b>Form/Appearance</b>     | Liquid  |
| <b>Storage</b>             | Maintain refrigerated at 2-8°C for up to 2 weeks. For long term storage store at -20°C in small aliquots to prevent freeze-thaw cycles. |
| <b>Note</b>                | For research use only   |
| <b>Isotype</b>             | IgG   |
| <b>Clonality</b>           | Polyclonal  |
| <b>Uniprot ID</b>          | <b>P27695</b>   |
| <b>Dilution Range</b>      | WB:1:1000-5000, IHC-P:1:20-200  |
| <b>Expiration Date</b>     | 12 months from date of receipt.   |



Western blot analysis of HeLa whole cell...



Immunohistochemical staining of Human te...



Immunohistochemical staining of human to...