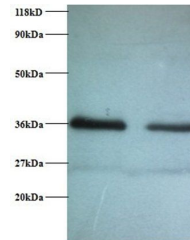


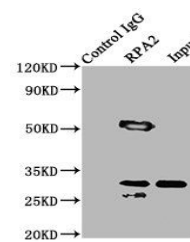
Product Datasheet

Replication protein A 32 kDa subunit antibody (orb238995)

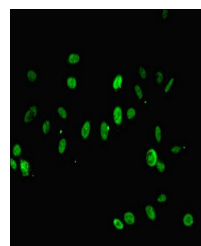
Description	Replication protein A 32 kDa subunit antibody
Species/Host	Rabbit
Reactivity	Human
Conjugation	Unconjugated
Tested Applications	ELISA, IF, IHC, IP, WB
Immunogen	Recombinant Human Replication protein A 32 kDa subunit protein (1-267AA)
Target	RPA2
Preservatives	Preservative: 0.03% Proclin 300. Constituents: 50% Glycerol
Form/Appearance	Liquid
Storage	Maintain refrigerated at 2-8°C for up to 2 weeks. For long term storage store at -20°C in small aliquots to prevent freeze-thaw cycles.
Note	For research use only
Isotype	IgG
Clonality	Polyclonal
Uniprot ID	P15927
Dilution Range	WB:1:1000-1:5000, IHC-P:1:20-1:200, IF:1:50-1:200, IP:1:200-1:2000
Expiration Date	12 months from date of receipt.



Western blot analysis of (Lane 1): EC109...



Immunoprecipitation analysis of HeLa cells...



Immunofluorescence analysis of HeLa cells...