

Product Datasheet

Myelin-associated glycoprotein antibody (orb238722)

Description Myelin-associated glycoprotein antibody

Species/Host Rabbit

Reactivity Human, Mouse, Rat

Conjugation Unconjugated

Tested Applications ELISA, IF, IHC, WB

Immunogen Recombinant Human Myelin-associated glycoprotein protein (25-516AA)

Target MAG

Preservatives Preservative: 0.03% Proclin 300.
Constituents: 50% Glycerol

Form/Appearance Liquid

Storage Maintain refrigerated at 2-8°C for up to 2 weeks. For long term storage store at -20°C in small aliquots to prevent freeze-thaw cycles.

Note For research use only

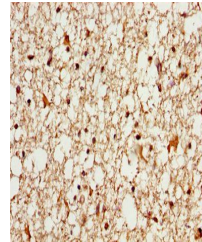
Isotype IgG

Clonality Polyclonal

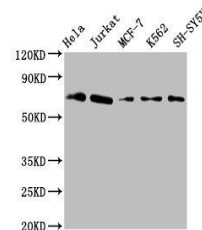
Uniprot ID **P20916**

Dilution Range WB:1:2000-1:10000, IHC-P:1:500-1:1000,
IF:1:200-1:500

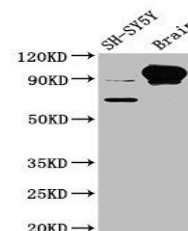
Expiration Date 12 months from date of receipt.



Immunohistochemistry of paraffin-embedde...



Western blot aanalysis of HeLa whole cel...



Western blot aanalysis of SH-SY5Y whole ...