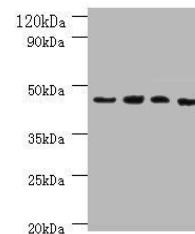


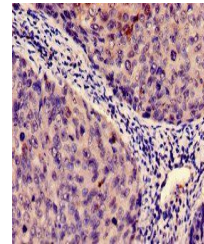
## Product Datasheet

### IDO antibody (orb238577)

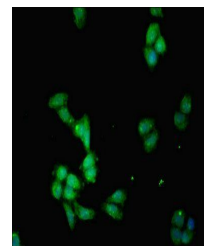
|                            |   |
|----------------------------|---|
| <b>Description</b>         | IDO antibody  |
| <b>Species/Host</b>        | Rabbit  |
| <b>Reactivity</b>          | Human   |
| <b>Conjugation</b>         | Unconjugated  |
| <b>Tested Applications</b> | ELISA, IF, IHC, WB  |
| <b>Immunogen</b>           | Recombinant Human Indoleamine 2,3-dioxygenase 1 protein (1-403AA) |
| <b>Target</b>              | IDO1  |
| <b>Preservatives</b>       | Preservative: 0.03% Proclin 300. Constituents: 50% Glycerol       |
| <b>Form/Appearance</b>     | Liquid  |
| <b>Storage</b>             | Upon receipt, store at -20°C or -80°C. Avoid repeated freeze.     |
| <b>Note</b>                | For research use only   |
| <b>Isotype</b>             | IgG   |
| <b>Clonality</b>           | Polyclonal  |
| <b>Uniprot ID</b>          | <b>P14902</b>   |
| <b>Dilution Range</b>      | WB:1:500-1:5000, IHC-P:1:20-1:200, IF:1:50-1:500                  |
| <b>Expiration Date</b>     | 12 months from date of receipt.                                   |



Western blot analysis of HeLa(Lane 1), k...



Immunohistochemical staining of human ce...



Immunofluorescence analysis of HepG2 cel...