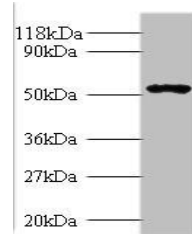


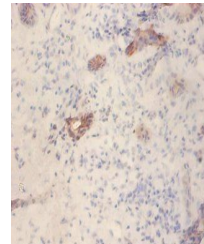
Product Datasheet

Glucagon-like peptide 1 R antibody (orb238545)

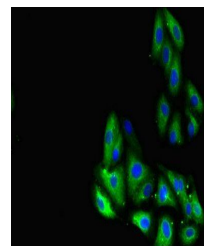
Description	Glucagon-like peptide 1 R antibody
Species/Host	Rabbit
Reactivity	Human
Conjugation	Unconjugated
Tested Applications	ELISA, IF, IHC, WB
Immunogen	Recombinant Human Glucagon-like peptide 1 receptor protein (24-145AA)
Target	GLP1R
Preservatives	Preservative: 0.03% Proclin 300. Constituents: 50% Glycerol
Form/Appearance	Liquid
Storage	Maintain refrigerated at 2-8°C for up to 2 weeks. For long term storage store at -20°C in small aliquots to prevent freeze-thaw cycles.
Note	For research use only
Isotype	IgG
Clonality	Polyclonal
Uniprot ID	P43220
Dilution Range	WB:1:500-1:5000, IHC-P:1:20-1:200, IF:1:50-1:200
Expiration Date	12 months from date of receipt.



Western blot analysis of 293T whole cell...



Immunohistochemical staining of human pa...



Immunofluorescence analysis of HepG2 cel...