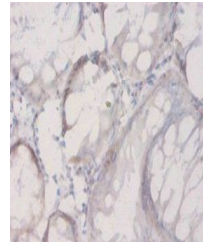


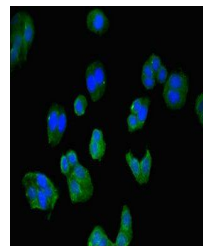
Product Datasheet

Connective tissue growth factor antibody (orb238533)

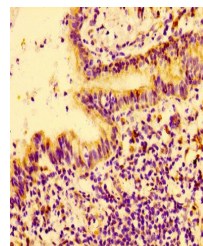
Description	Connective tissue growth factor antibody
Species/Host	Rabbit
Reactivity	Human
Conjugation	Unconjugated
Tested Applications	ELISA, IF, IHC
Immunogen	Recombinant Human Connective tissue growth factor protein (253-349AA)
Target	CTGF
Preservatives	Preservative: 0.03% Proclin 300. Constituents: 50% Glycerol
Form/Appearance	Liquid
Storage	Upon receipt, store at -20°C or -80°C. Avoid repeated freeze.
Note	For research use only
Isotype	IgG
Clonality	Polyclonal
Uniprot ID	P29279
Dilution Range	IHC-P:1:20-1:200, IF:1:50-1:200
Expiration Date	12 months from date of receipt.



Immunohistochemical staining of human connective tissue.



Immunofluorescence analysis of HepG2 cells.



Immunohistochemical staining of human lung tissue.