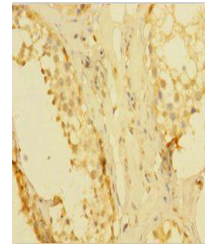


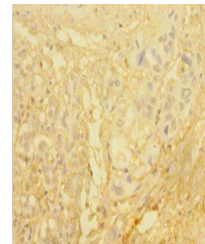
Product Datasheet

Kallikrein-1 antibody (orb238389)

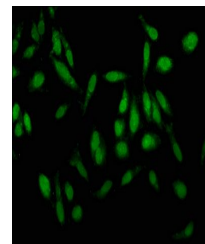
Description	Kallikrein-1 antibody
Species/Host	Rabbit
Reactivity	Human
Conjugation	Unconjugated
Tested Applications	ELISA, IF, IHC
Immunogen	Recombinant Human Kallikrein-1 protein (25-262AA)
Target	KLK1
Preservatives	Preservative: 0.03% Proclin 300. Constituents: 50% Glycerol
Form/Appearance	Liquid
Storage	Maintain refrigerated at 2-8°C for up to 2 weeks. For long term storage store at -20°C in small aliquots to prevent freeze-thaw cycles.
Note	For research use only
Isotype	IgG
Clonality	Polyclonal
Uniprot ID	P06870
Dilution Range	IHC-P:1:200-1:500, IF:1:50-1:200
Expiration Date	12 months from date of receipt.



Immunohistochemical staining of human te...



Immunohistochemical staining of human pa...



Immunofluorescence analysis of HeLa cell...