
Product Datasheet

Glyceraldehyde-3-phosphate dehydrogenase antibody (orb238246)

Description

Glyceraldehyde-3-phosphate dehydrogenase

Species/Host

Rabbit

Reactivity

Human

Conjugation

Unconjugated

Tested Applications

ELISA, IF, IHC, WB

Immunogen

Recombinant Human Glyceraldehyde-3-phosphate dehydrogenase protein (3-335AA)

Target

Ovotransferrin

Preservatives

Preservative: 0.03% Proclin 300. Constituents: 50% Glycerol

Form/Appearance

Liquid

Storage

Maintain refrigerated at 2-8°C for up to 2 weeks. For long term storage store at -20°C in small aliquots to prevent freeze-thaw cycles.

Note

For research use only

Isotype

IgG

Clonality

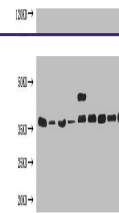
Polyclonal

Uniprot ID
P04406
Dilution Range

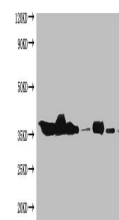
IHC-P:1:20-200, IF:1:50-200

Expiration Date

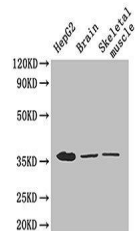
12 months from date of receipt.



Western blot analysis of HeLa(Lane 1), A...



Western blot analysis of HeLa(Lane 1), 2...



Western blot analysis of hepG2 cell