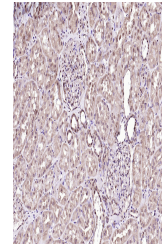


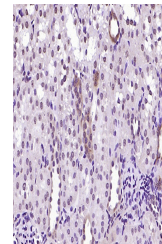
Product Datasheet

RGC32 antibody (orb2372)

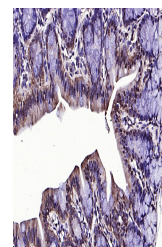
Description	RGC32 antibody
Species/Host	Rabbit
Reactivity	Human, Mouse, Rat
Conjugation	Unconjugated
Tested Applications	FC, IHC-P
Immunogen	KLH conjugated synthetic peptide derived from human RGC32 (65-137/137 aa)
Target	RGC32/C13orf15
Preservatives	0.01M TBS(pH7.4) with 1% rAlbumin, 0.03% Proclin300 and 50% Glycerol.
Form/Appearance	Liquid
Concentration	1mg/ml
Storage	Shipped at 4°C. Store at -20 °C for one year. Avoid repeated freeze/thaw cycles.
Note	For research use only
Isotype	IgG
Clonality	Polyclonal
MW	15 kDa
Uniprot ID	Q9H4X1
Dilution Range	IHC-P=1:100-500, Flow-Cyt=1ug/test, IHC-F=1:100-500, IF=1:50-200, ELISA=1:5000-10000
Expiration Date	12 months from date of receipt.



IHC-P image of human kidney tissue using...



IHC-P image of rat kidney tissue using R...



IHC-P image of rat colon tissue using RG...