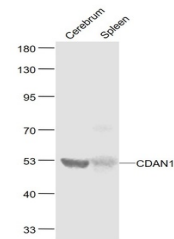


Product Datasheet

CDAN1 antibody (orb2363)

Description	CDAN1 antibody
Species/Host	Rabbit
Reactivity	Mouse
Conjugation	Unconjugated
Tested Applications	WB
Immunogen	KLH conjugated synthetic peptide derived from human CDAN1 (1175-1227/1227 aa)
Target	CDAN1
Preservatives	0.01M TBS(pH7.4) with 1% rAlbumin, 0.03% Proclin300 and 50% Glycerol.
Form/Appearance	Liquid
Concentration	1mg/ml
Storage	Maintain refrigerated at 2-8°C for up to 2 weeks. For long term storage store at -20°C in small aliquots to prevent freeze-thaw cycles.
Note	For research use only
Isotype	IgG
Clonality	Polyclonal
MW	56/130 kDa
Uniprot ID	Q8IWY9
Dilution Range	WB=1:500-2000
Expiration Date	12 months from date of receipt.



Western blot:Cerebrum (Mouse);Spleen (Mo...