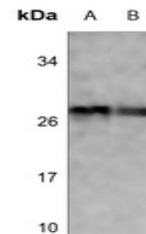


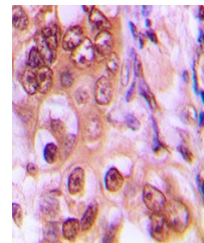
Product Datasheet

p27 Kip1 (phospho-T187) antibody (orb235086)

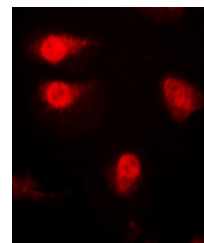
Description	Rabbit polyclonal antibody to p27 Kip1 (phospho-T187)
Species/Host	Rabbit
Reactivity	Human, Mouse, Rat
Conjugation	Unconjugated
Tested Applications	IF, IH, WB
Immunogen	KLH-conjugated synthetic phosphopeptide corresponding to residues surrounding T187 of human p27 Kip1 protein. The exact sequence is proprietary.
Target	CDKN1B
Preservatives	Liquid in 0.42% Potassium phosphate, 0.87% Sodium chloride, pH 7.3, 30% glycerol, and 0.01% sodium azide.
Form/Appearance	Liquid in 0.42% Potassium phosphate, 0.87% Sodium chloride, pH 7.3, 30% glycerol, and 0.01% sodium azide.
Storage	Maintain refrigerated at 2-8°C for up to 2 weeks. For long term storage store at -20°C in small aliquots to prevent freeze-thaw cycles.
Note	For research use only
Clonality	Polyclonal
Source	Rabbit
Uniprot ID	P46527, P46414
Entrez	12576, 1027
Dilution Range	WB: 1:500-1000, IHC-P: 1:100-200, IF/ICC: 1:100-500
Expiration Date	12 months from date of receipt.



Western blot analysis of p27 Kip1 (Phosp...



Immunohistochemical analysis of p27 Kip1...



Immunofluorescent analysis of p27 Kip1 (...)