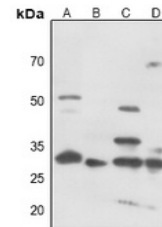


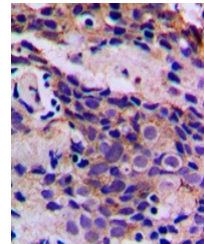
Product Datasheet

CDK5 (phospho-Y15) antibody (orb235084)

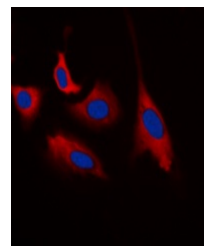
Description	Rabbit polyclonal antibody to CDK5 (phospho-Y15)
Species/Host	Rabbit
Reactivity	Human, Mouse, Porcine, Rat, Sheep
Conjugation	Unconjugated
Tested Applications	IF, IH, WB
Immunogen	KLH-conjugated synthetic phosphopeptide corresponding to residues surrounding Y15 of human CDK5 protein. The exact sequence is proprietary.
Target	CDK5
Preservatives	Liquid in 0.42% Potassium phosphate, 0.87% Sodium chloride, pH 7.3, 30% glycerol, and 0.01% sodium azide.
Form/Appearance	Liquid in 0.42% Potassium phosphate, 0.87% Sodium chloride, pH 7.3, 30% glycerol, and 0.01% sodium azide.
Storage	Shipped at 4°C. Upon delivery aliquot and store at -20°C for one year. Avoid freeze/thaw cycles.
Note	For research use only
Clonality	Polyclonal
Source	Rabbit
Uniprot ID	Q00535 , Q03114 , P49615
Entrez	1020 , 140908 , 12568
Dilution Range	WB: 1:500-1000, IHC-P: 1:100-200, IF/ICC: 1:100-500
Expiration Date	12 months from date of receipt.



Western blot analysis of CDK5 (Phospho-Y15)



Immunohistochemical analysis of CDK5 (Phospho-Y15)



Immunofluorescent analysis of CDK5 (Phospho-Y15)