

---

## Product Datasheet

### Calmodulin (phospho-T80/S82) antibody (orb235054)

**Description**

Rabbit polyclonal antibody to Calmodulin

**Species/Host**

Rabbit

**Reactivity**

Human, Mouse, Rabbit, Rat, Sheep, Zebrafish

**Conjugation**

Unconjugated

**Tested Applications**

IF, IH, WB

**Immunogen**

KLH-conjugated synthetic phosphopeptide corresponding to residues surrounding T80/S82 of human Calmodulin protein. The exact sequence is proprietary.

**Target**

CALM1

**Preservatives**

Liquid in 0.42% Potassium phosphate, 0.87% Sodium chloride, pH 7.3, 30% glycerol, and 0.01% sodium azide.

**Form/Appearance**

Liquid in 0.42% Potassium phosphate, 0.87% Sodium chloride, pH 7.3, 30% glycerol, and 0.01% sodium azide.

**Storage**

Shipped at 4°C. Upon delivery aliquot and store at -20°C for one year. Avoid freeze/thaw cycles.

**Note**

For research use only

**Clonality**

Polyclonal

**Source**

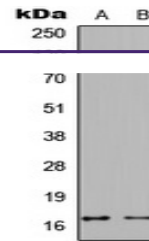
Rabbit

**Uniprot ID**
[P62158](#), [P62204](#), [P62161](#)
**Entrez**
[808](#), [12315](#), [805](#), [24242](#), [50663](#), [24244](#), [12314](#), [801](#), [12313](#)
**Dilution Range**

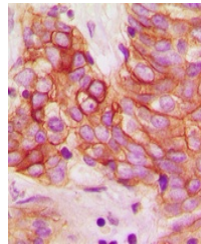
WB: 1:500-1000, IHC-P: 1:100-200, IF/ICC: 1:100-500

**Expiration Date**

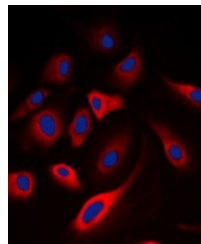
12 months from date of receipt.



Western blot analysis of Calmodulin (Pho...



Immunohistochemical analysis of Calmodul...



Immunofluorescent analysis of Calmodulin...