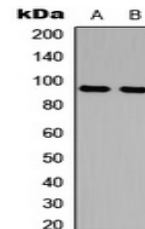


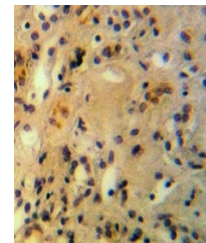
Product Datasheet

AMPD2 antibody (orb235009)

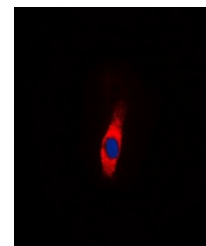
Description	Rabbit polyclonal antibody to AMPD2
Species/Host	Rabbit
Reactivity	Human, Mouse, Porcine, Rat
Conjugation	Unconjugated
Tested Applications	IF, IH, WB
Immunogen	KLH-conjugated synthetic peptide encompassing a sequence within the center region of human AMPD2. The exact sequence is proprietary.
Target	AMPD2
Preservatives	Liquid in 0.42% Potassium phosphate, 0.87% Sodium chloride, pH 7.3, 30% glycerol, and 0.01% sodium azide.
Form/Appearance	Liquid in 0.42% Potassium phosphate, 0.87% Sodium chloride, pH 7.3, 30% glycerol, and 0.01% sodium azide.
Storage	Maintain refrigerated at 2-8°C for up to 2 weeks. For long term storage store at -20°C in small aliquots to prevent freeze-thaw cycles.
Note	For research use only
Clonality	Polyclonal
Source	Rabbit
Uniprot ID	Q9DBT5 , Q01433 , Q02356
Entrez	362015 , 271 , 109674
Dilution Range	WB: 1:500-1000, IF/ICC: 1:100-500, IP: 1:10-100
Expiration Date	12 months from date of receipt.



Western blot analysis of AMPD2 expressio...



Immunohistochemical analysis of AMPD2 st...



Immunofluorescent analysis of AMPD2 stai...