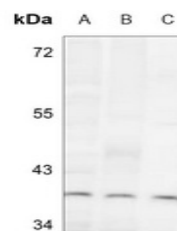


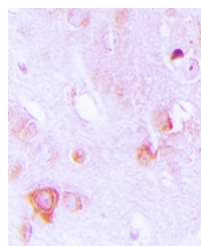
Product Datasheet

ALDOC antibody (orb235007)

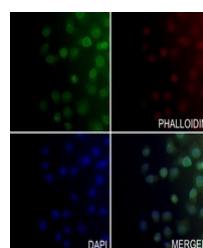
Description	Rabbit polyclonal antibody to ALDOC
Species/Host	Rabbit
Reactivity	Human, Mouse, Porcine, Primate, Rabbit, Rat
Conjugation	Unconjugated
Tested Applications	IF, IH, WB
Immunogen	KLH-conjugated synthetic peptide encompassing a sequence within the center region of human ALDOC. The exact sequence is proprietary.
Target	ALDOC
Preservatives	Liquid in 0.42% Potassium phosphate, 0.87% Sodium chloride, pH 7.3, 30% glycerol, and 0.01% sodium azide.
Form/Appearance	Liquid in 0.42% Potassium phosphate, 0.87% Sodium chloride, pH 7.3, 30% glycerol, and 0.01% sodium azide.
Storage	Maintain refrigerated at 2-8°C for up to 2 weeks. For long term storage store at -20°C in small aliquots to prevent freeze-thaw cycles.
Note	For research use only
Clonality	Polyclonal
Source	Rabbit
Uniprot ID	P09972 , P09117 , P05063
Entrez	230 , 11676 , 24191
Dilution Range	WB: 1:500-1000, IHC-P: 1:100-200
Expiration Date	12 months from date of receipt.



Western blot analysis of ALDOC expressio...



Immunohistochemical analysis of ALDOC st...



Immunofluorescent analysis of ALDOC stai...