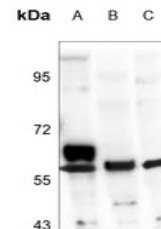


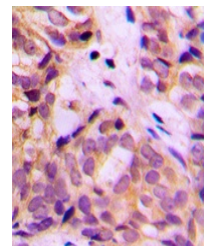
Product Datasheet

ALDH1A2 antibody (orb235005)

Description	Rabbit polyclonal antibody to ALDH1A2
Species/Host	Rabbit
Reactivity	Human, Mouse, Primate, Rat
Conjugation	Unconjugated
Tested Applications	IF, IH, WB
Immunogen	KLH-conjugated synthetic peptide encompassing a sequence within the C-term region of human ALDH1A2. The exact sequence is proprietary.
Target	ALDH1A2
Preservatives	Liquid in 0.42% Potassium phosphate, 0.87% Sodium chloride, pH 7.3, 30% glycerol, and 0.01% sodium azide.
Form/Appearance	Liquid in 0.42% Potassium phosphate, 0.87% Sodium chloride, pH 7.3, 30% glycerol, and 0.01% sodium azide.
Storage	Maintain refrigerated at 2-8°C for up to 2 weeks. For long term storage store at -20°C in small aliquots to prevent freeze-thaw cycles.
Note	For research use only
Clonality	Polyclonal
Source	Rabbit
Uniprot ID	Q63639 , Q62148 , O94788
Entrez	8854 , 116676 , 19378
Dilution Range	WB: 1:500-1000, IHC-P: 1:100-200, IF/ICC: 1:100-500
Expiration Date	12 months from date of receipt.

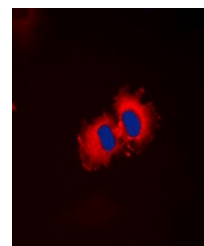


Western blot analysis of ALDH1A2 express...



Immunohistochemical analysis of ALDH1A2

...



Immunofluorescent analysis of ALDH1A2 st...