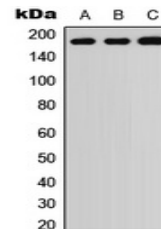


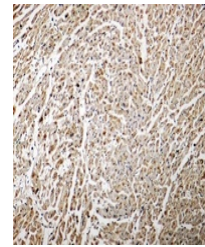
Product Datasheet

ADAMTS7 antibody (orb234998)

Description	Rabbit polyclonal antibody to ADAMTS7
Species/Host	Rabbit
Reactivity	Human, Mouse, Rat
Conjugation	Unconjugated
Tested Applications	IH, WB
Immunogen	KLH-conjugated synthetic peptide encompassing a sequence within the center region of human ADAMTS7. The exact sequence is proprietary.
Target	ADAMTS7
Preservatives	Liquid in 0.42% Potassium phosphate, 0.87% Sodium chloride, pH 7.3, 30% glycerol, and 0.01% sodium azide.
Form/Appearance	Liquid in 0.42% Potassium phosphate, 0.87% Sodium chloride, pH 7.3, 30% glycerol, and 0.01% sodium azide.
Storage	Shipped at 4°C. Upon delivery aliquot and store at -20°C for one year. Avoid freeze/thaw cycles.
Note	For research use only
Clonality	Polyclonal
Source	Rabbit
Uniprot ID	Q68SA9 , Q1EHB3 , Q9UKP4
Entrez	11173 , 315879 , 108153
Dilution Range	WB: 1:500-1000
Expiration Date	12 months from date of receipt.



Western blot analysis of ADAMTS7 express...



Immunohistochemical analysis of ADAMTS7

...