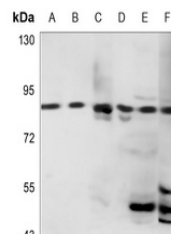


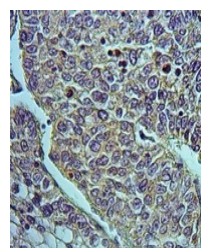
Product Datasheet

HSD17B4 antibody (orb234876)

Description	Rabbit polyclonal antibody to HSD17B4
Species/Host	Rabbit
Reactivity	Human, Mouse, Primate, Rat
Conjugation	Unconjugated
Tested Applications	IF, IH, WB
Immunogen	KLH-conjugated synthetic peptide encompassing a sequence within the center region of human HSD17B4. The exact sequence is proprietary.
Target	HSD17B4
Preservatives	Liquid in 0.42% Potassium phosphate, 0.87% Sodium chloride, pH 7.3, 30% glycerol, and 0.01% sodium azide.
Form/Appearance	Liquid in 0.42% Potassium phosphate, 0.87% Sodium chloride, pH 7.3, 30% glycerol, and 0.01% sodium azide.
Storage	Maintain refrigerated at 2-8°C for up to 2 weeks. For long term storage store at -20°C in small aliquots to prevent freeze-thaw cycles.
Note	For research use only
Clonality	Polyclonal
Source	Rabbit
Uniprot ID	P51660 , P51659 , P97852
Entrez	15488 , 79244 , 3295
Dilution Range	WB: 1:500-1000
Expiration Date	12 months from date of receipt.

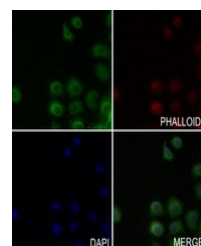


Western blot analysis of HSD17B4 express...



Immunohistochemical analysis of HSD17B4

...



Immunofluorescent analysis of HSD17B4 st...