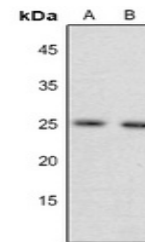


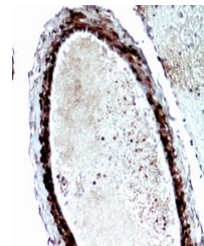
Product Datasheet

FGF17 antibody (orb234842)

Description	Rabbit polyclonal antibody to FGF17
Species/Host	Rabbit
Reactivity	Human, Mouse, Primate, Rat, Sheep
Conjugation	Unconjugated
Tested Applications	IH, WB
Immunogen	KLH-conjugated synthetic peptide encompassing a sequence within the C-term region of human FGF17. The exact sequence is proprietary.
Target	FGF17
Preservatives	Liquid in 0.42% Potassium phosphate, 0.87% Sodium chloride, pH 7.3, 30% glycerol, and 0.01% sodium azide.
Form/Appearance	Liquid in 0.42% Potassium phosphate, 0.87% Sodium chloride, pH 7.3, 30% glycerol, and 0.01% sodium azide.
Storage	Maintain refrigerated at 2-8°C for up to 2 weeks. For long term storage store at -20°C in small aliquots to prevent freeze-thaw cycles.
Note	For research use only
Clonality	Polyclonal
Source	Rabbit
Uniprot ID	O60258 , P63076 , P63075
Entrez	8822 , 14171 , 29368
Dilution Range	WB: 1:500-1000
Expiration Date	12 months from date of receipt.



Western blot analysis of FGF17 expressio...



Immunohistochemical analysis of FGF17 st...