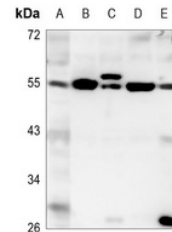


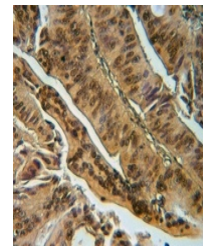
Product Datasheet

EYA1 antibody (orb234835)

Description	Rabbit polyclonal antibody to EYA1
Species/Host	Rabbit
Reactivity	Human, Mouse, Primate, Rat, Zebrafish
Conjugation	Unconjugated
Tested Applications	IH, WB
Immunogen	KLH-conjugated synthetic peptide encompassing a sequence within the center region of human EYA1. The exact sequence is proprietary.
Target	EYA1; EYA4
Preservatives	Liquid in 0.42% Potassium phosphate, 0.87% Sodium chloride, pH 7.3, 30% glycerol, and 0.01% sodium azide.
Form/Appearance	Liquid in 0.42% Potassium phosphate, 0.87% Sodium chloride, pH 7.3, 30% glycerol, and 0.01% sodium azide.
Storage	Maintain refrigerated at 2-8°C for up to 2 weeks. For long term storage store at -20°C in small aliquots to prevent freeze-thaw cycles.
Note	For research use only
Clonality	Polyclonal
Source	Rabbit
Uniprot ID	P97767 , O95677 , Q9Z191 , Q99502
Entrez	2070 , 2138
Dilution Range	WB: 1:500-1000
Expiration Date	12 months from date of receipt.



Western blot analysis of EYA1 expression...



Immunohistochemical analysis of EYA1 sta...