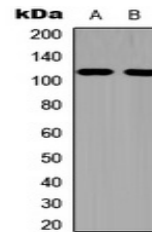


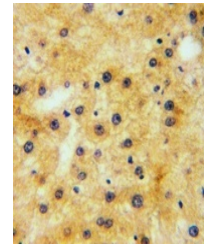
Product Datasheet

EPHA1 (phospho-Y605) antibody (orb234833)

Description	Rabbit polyclonal antibody to EPHA1 (phospho-Y605)
Species/Host	Rabbit
Reactivity	Human, Mouse, Porcine, Rabbit, Rat
Conjugation	Unconjugated
Tested Applications	IH, WB
Immunogen	KLH-conjugated synthetic phosphopeptide corresponding to residues surrounding Y605 of human EPHA1 protein. The exact sequence is proprietary.
Target	EPHA1
Preservatives	Liquid in 0.42% Potassium phosphate, 0.87% Sodium chloride, pH 7.3, 30% glycerol, and 0.01% sodium azide.
Form/Appearance	Liquid in 0.42% Potassium phosphate, 0.87% Sodium chloride, pH 7.3, 30% glycerol, and 0.01% sodium azide.
Storage	Maintain refrigerated at 2-8°C for up to 2 weeks. For long term storage store at -20°C in small aliquots to prevent freeze-thaw cycles.
Note	For research use only
Clonality	Polyclonal
Source	Rabbit
Uniprot ID	Q60750 , P21709
Entrez	2041 , 13835
Dilution Range	WB: 1:500-1000
Expiration Date	12 months from date of receipt.



Western blot analysis of EPHA1 (Phospho-...



Immunohistochemical analysis of EPHA1 (P...