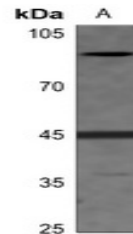


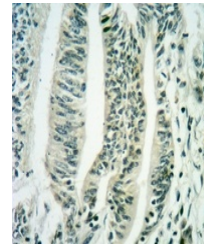
Product Datasheet

EIF2S2 (phospho-S67) antibody (orb234829)

Description	Rabbit polyclonal antibody to EIF2S2 (phospho-S67)
Species/Host	Rabbit
Reactivity	Human, Mouse, Primate, Rat
Conjugation	Unconjugated
Tested Applications	IH, WB
Immunogen	KLH-conjugated synthetic phosphopeptide corresponding to residues surrounding S67 of human EIF2S2 protein. The exact sequence is proprietary.
Target	EIF2S2
Preservatives	Liquid in 0.42% Potassium phosphate, 0.87% Sodium chloride, pH 7.3, 30% glycerol, and 0.01% sodium azide.
Form/Appearance	Liquid in 0.42% Potassium phosphate, 0.87% Sodium chloride, pH 7.3, 30% glycerol, and 0.01% sodium azide.
Storage	Maintain refrigerated at 2-8°C for up to 2 weeks. For long term storage store at -20°C in small aliquots to prevent freeze-thaw cycles.
Note	For research use only
Clonality	Polyclonal
Source	Rabbit
Uniprot ID	Q99L45 , P20042
Entrez	8894 , 67204
Dilution Range	WB: 1:500-1000
Expiration Date	12 months from date of receipt.



Western blot analysis of EIF2S2 (Phospho-S67)



Immunohistochemical analysis of EIF2S2 (Phospho-S67)