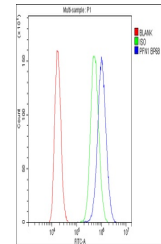


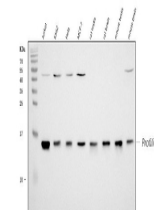
Product Datasheet

Profilin 1/PFN1 Antibody (orb234359)

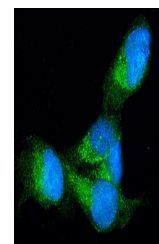
Description	Profilin 1/PFN1 Antibody
Species/Host	Rabbit
Reactivity	Human, Mouse, Rat
Conjugation	Unconjugated
Tested Applications	FC, ICC, IF, IHC, WB
Immunogen	A synthetic peptide corresponding to a sequence at the C-terminus of human Profilin 1 (116-140aa KEGVHGGLINKKCYEMASHLRRSQY), identical to the related mouse and rat sequences.
Form/Appearance	Lyophilized
Concentration	Adding 0.2 ml of distilled water will yield a concentration of 500 µg/ml.
Storage	Store at -20°C for one year from date of receipt. After reconstitution, at 4°C for one month. It can also be aliquotted and stored frozen at -20°C for six months. Avoid repeated freeze-thaw cycles.
Note	For research use only
Application notes	WB: The detection limit for Profilin 1 is approximately 0.1ng/lane under reducing conditions. Tested Species: In-house tested species with positive results. Other applications have not been tested. Optimal dilutions should be determined by end users. . Add 0.2ml of distilled water will yield a concentration of 500ug/ml.
Isotype	Rabbit IgG
Clonality	Polyclonal
MW	15054 MW
Uniprot ID	P07737
Expiration Date	12 months from date of receipt.



Flow Cytometry analysis of PC-3 cells us...



WB analysis of Profilin1 using anti-Prof...



IF analysis of Profilin 1 using anti-Pro...