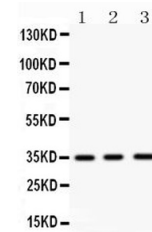


Product Datasheet

Nkx2.5/NKX2-5 Antibody (orb234339)

| | |
|----------------------------|---|
| Description | Nkx2.5/NKX2-5 Antibody |
| Species/Host | Rabbit |
| Reactivity | Human, Mouse |
| Conjugation | Unconjugated |
| Tested Applications | WB |
| Immunogen | A synthetic peptide corresponding to a sequence in the middle region of human Nkx2.5 (103-132aa AKDPRAEKKELCALQKAVELEKTEADNAER), different from the related mouse and rat sequences by five amino acids. |
| Form/Appearance | Lyophilized |
| Concentration | Adding 0.2 ml of distilled water will yield a concentration of 500 µg/ml. |
| Storage | Store at -20°C for one year from date of receipt. After reconstitution, at 4°C for one month. It can also be aliquotted and stored frozen at -20°C for six months. Avoid repeated freeze-thaw cycles. |
| Note | For research use only |
| Application notes | WB: The detection limit for Nkx2.5 is approximately 0.1ng/lane under reducing conditions. Tested Species: In-house tested species with positive results. Other applications have not been tested. Optimal dilutions should be determined by end users. . Add 0.2ml of distilled water will yield a concentration of 500ug/ml. |
| Isotype | Rabbit IgG |
| Clonality | Polyclonal |
| MW | 34918 MW |
| Uniprot ID | P52952 |
| Expiration Date | 12 months from date of receipt. |



Western blot analysis using Anti-NKX2 Pi...