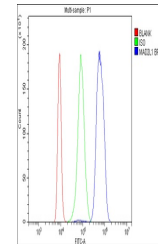


## Product Datasheet

### Mad2L1 Antibody (orb234328)

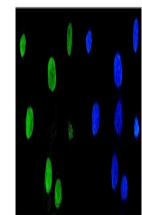
<b>Description</b>	Mad2L1 Antibody
<b>Species/Host</b>	Rabbit
<b>Reactivity</b>	Human
<b>Conjugation</b>	Unconjugated
<b>Tested Applications</b>	FC, ICC, IF, WB
<b>Immunogen</b>	E.coli-derived human Mad2L1 recombinant protein (Position: A2-D205). Human Mad2L1 shares 94% amino acid (aa) sequence identity with mouse Mad2L1.
<b>Form/Appearance</b>	Lyophilized
<b>Concentration</b>	Adding 0.2 ml of distilled water will yield a concentration of 500 µg/ml.
<b>Storage</b>	Store at -20°C for one year from date of receipt. After reconstitution, at 4°C for one month. It can also be aliquotted and stored frozen at -20°C for six months. Avoid repeated freeze-thaw cycles.
<b>Note</b>	For research use only
<b>Application notes</b>	WB: The detection limit for Mad2L1 is approximately 0.5ng/lane under reducing conditions. Tested Species: In-house tested species with positive results. Other applications have not been tested. Optimal dilutions should be determined by end users. . Add 0.2ml of distilled water will yield a concentration of 500ug/ml.
<b>Isotype</b>	Rabbit IgG
<b>Clonality</b>	Polyclonal
<b>MW</b>	23510 MW
<b>Uniprot ID</b>	<a href="#">Q13257</a>
<b>Expiration Date</b>	12 months from date of receipt.



Flow Cytometry analysis of K562 cells us...



Western blot analysis using Anti-Mad2L1 ...



IF analysis of Mad2L1 using anti-Mad2L1 ...