
Product Datasheet

Heparan Sulfate Proteoglycan 2/HSPG2 Antibody (orb234323)

Description

Heparan Sulfate Proteoglycan 2/HSPG2 Antibody


Species/Host

Rabbit

Reactivity

Human

Conjugation

Unconjugated

Tested

IHC, WB

Applications

 IHC(P)
analysis of
Human
Lung
Cancer
Tis...

Immunogen

E.coli-derived human HSPG2 recombinant protein (Position: F524-K701). Human HSPG2 shares 86% amino acid (aa) sequence identity with mouse HSPG2.

Form/Appearance

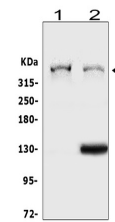
Lyophilized

Concentration

Adding 0.2 ml of distilled water will yield a concentration of 500 µg/ml.

Storage

Store at -20°C for one year from date of receipt. After reconstitution, at 4°C for one month. It can also be aliquotted and stored frozen at -20°C for six months. Avoid repeated freeze-thaw cycles.


 WB
analysis of
HSPG2
using anti-
HSPG2
an...

Note

For research use only

Application notes

WB: The detection limit for HSPG2 is approximately 0.1ng/lane under reducing conditions. Tested Species: In-house tested species with positive results. By Heat: Boiling the paraffin sections in 10mM citrate buffer, pH6.0, for 20mins is required for the staining of formalin/paraffin sections. Other applications have not been tested. Optimal dilutions should be determined by end users. . Add 0.2ml of distilled water will yield a concentration of 500ug/ml.

Isotype

Rabbit IgG

Clonality

Polyclonal

MW

468830 MW

Uniprot ID
P98160
Expiration Date

12 months from date of receipt.