
Product Datasheet

Von Willebrand Factor/VWF Antibody (orb234319)

Description

Von Willebrand Factor/VWF Antibody


Species/Host

Rabbit

Reactivity

Mouse, Rat

Conjugation

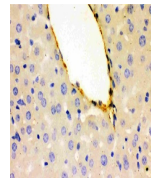
Unconjugated

Tested Applications

IF, IHC, WB

Immunogen

E.coli-derived mouse VWF recombinant protein (Position: M1304-E1452).


 IHC(P)
analysis of
Mouse Liver
Tissue us...

Form/Appearance

Lyophilized

Concentration

Adding 0.2 ml of distilled water will yield a concentration of 500 µg/ml.

Storage

Store at -20°C for one year from date of receipt. After reconstitution, at 4°C for one month. It can also be aliquotted and stored frozen at -20°C for six months. Avoid repeated freeze-thaw cycles.


 WB analysis
of
Recombinant
Mouse VWF
Pro...

Note

For research use only

Application notes

WB: The detection limit for VWF is approximately 0.25ng/lane under reducing conditions. Tested Species: In-house tested species with positive results. By Heat: Boiling the paraffin sections in 10mM citrate buffer, pH6.0, for 20mins is required for the staining of formalin/paraffin sections. Other applications have not been tested. Optimal dilutions should be determined by end users. . Add 0.2ml of distilled water will yield a concentration of 500ug/ml.


 WB analysis
of Mouse
Lung Tissue
using A...

Isotype

Rabbit IgG

Clonality

Polyclonal

MW

309269 MW

Uniprot ID
Q8CIZ8
Expiration Date

12 months from date of receipt.