

---

## Product Datasheet

### MAD1/MAD1L1 Antibody (orb234308)

**Description**

MAD1/MAD1L1 Antibody


**Species/Host**

Rabbit

**Reactivity**

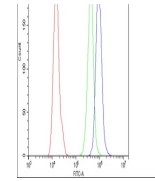
Human, Mouse, Rat

**Conjugation**

Unconjugated

**Tested Applications**

FC, ICC, IF, IHC, WB



Flow Cytometry analysis of A431 cells us...

**Immunogen**

E.coli-derived human MAD1 recombinant protein (Position: L362-A632). Human MAD1 shares 81% amino acid (aa) sequence identity with mouse MAD1.

**Form/Appearance**

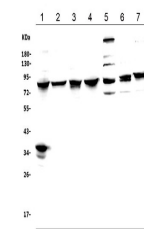
Lyophilized

**Concentration**

Adding 0.2 ml of distilled water will yield a concentration of 500 µg/ml.

**Storage**

Store at -20°C for one year from date of receipt. After reconstitution, at 4°C for one month. It can also be aliquotted and stored frozen at -20°C for six months. Avoid repeated freeze-thaw cycles.



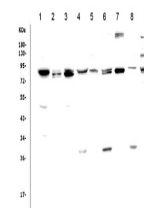
WB analysis of MAD1 using anti-MAD1 anti...

**Note**

For research use only

**Application notes**

WB: The detection limit for MAD1 is approximately 0.25ng/lane under reducing conditions. Tested Species: In-house tested species with positive results. By Heat: Boiling the paraffin sections in 10mM citrate buffer, pH6.0, for 20mins is required for the staining of formalin/paraffin sections. Other applications have not been tested. Optimal dilutions should be determined by end users. . Add 0.2ml of distilled water will yield a concentration of 500ug/ml.



WB analysis of MAD1 using anti-MAD1 anti...

**Isotype**

Rabbit IgG

**Clonality**

Polyclonal

**MW**

83067 MW

**Uniprot ID**
[Q9Y6D9](https://www.uniprot.org/entry/Q9Y6D9)
**Expiration Date**

12 months from date of receipt.