

---

## Product Datasheet

### Integrin alpha 5/ITGA5 Antibody (orb234300)

**Description**

Integrin alpha 5/ITGA5 Antibody

**Species/Host**

Rabbit

**Reactivity**

Human, Mouse, Rat

**Conjugation**

Unconjugated

**Tested**

WB

**Applications**
**Immunogen**

E.coli-derived human Integrin alpha 5 recombinant protein (Position: E787-E992). Human Integrin alpha 5 shares 86% amino acid (aa) sequence identity with mouse Integrin alpha 5.

**Form/Appearance**

Lyophilized

**Concentration**

Adding 0.2 ml of distilled water will yield a concentration of 500 µg/ml.

**Storage**

Store at -20°C for one year from date of receipt. After reconstitution, at 4°C for one month. It can also be aliquotted and stored frozen at -20°C for six months. Avoid repeated freeze-thaw cycles.

**Note**

For research use only

**Application notes**

WB: The detection limit for Integrin alpha 5 is approximately 0.25ng/lane under reducing conditions. Tested Species: In-house tested species with positive results. Other applications have not been tested. Optimal dilutions should be determined by end users. . Add 0.2ml of distilled water will yield a concentration of 500ug/ml.

**Isotype**

Rabbit IgG

**Clonality**

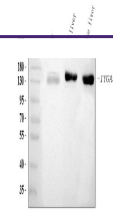
Polyclonal

**MW**

114536 MW

**Uniprot ID**
**P08648**
**Expiration Date**

12 months from date of receipt.



WB analysis of ITGA5 using anti-ITGA5 an...