
Product Datasheet

PKC delta/PRKCD Antibody (orb234285)

Description

PKC delta/PRKCD Antibody

116KD - 1 2 3 4 5 6

Species/Host

Rabbit

Reactivity

Human

Conjugation

Unconjugated

Tested

ICC, IF, WB

Applications
Immunogen

E.coli-derived human PKC delta recombinant protein (Position: M1-E160). Human PKC delta shares 95% and 93% amino acid (aa) sequence identity with mouse and rat PKC delta, respectively.

Form/Appearance

Lyophilized

Concentration

Adding 0.2 ml of distilled water will yield a concentration of 500 µg/ml.

Storage

Store at -20°C for one year from date of receipt. After reconstitution, at 4°C for one month. It can also be aliquotted and stored frozen at -20°C for six months. Avoid repeated freeze-thaw cycles.

Note

For research use only

Application notes

WB: The detection limit for PKC delta is approximately 0.25ng/lane under reducing conditions. Tested Species: In-house tested species with positive results. Other applications have not been tested. Optimal dilutions should be determined by end users. . Add 0.2ml of distilled water will yield a concentration of 500ug/ml.

Isotype

Rabbit IgG

Clonality

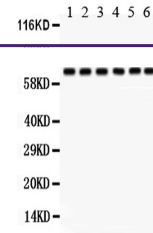
Polyclonal

MW

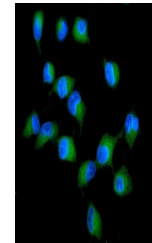
77505 MW

Uniprot ID
[Q05655](#)
Expiration Date

12 months from date of receipt.



WB analysis using Anti-PKC delta antibody...



IF analysis of PKC delta using anti-PKC ...