

---

## Product Datasheet

### P Glycoprotein/ABCB1 Antibody (orb234261)

**Description**

P Glycoprotein/ABCB1 Antibody

**Species/Host**

Rabbit

**Reactivity**

Human, Mouse, Rat

**Conjugation**

Unconjugated

**Tested**

IHC

**Applications**
**Immunogen**

A synthetic peptide corresponding to a sequence in the middle region of human P Glycoprotein (621-650aa IYFKLVMTQTAGNEVELENAADESKSEIDA), different from the related rat sequence by twelve amino acids.

**Form/Appearance**

Lyophilized

**Concentration**

Adding 0.2 ml of distilled water will yield a concentration of 500 µg/ml.

**Storage**

Store at -20°C for one year from date of receipt. After reconstitution, at 4°C for one month. It can also be aliquotted and stored frozen at -20°C for six months. Avoid repeated freeze-thaw cycles.

**Note**

For research use only

**Application notes**

Tested Species: In-house tested species with positive results. By Heat: Boiling the paraffin sections in 10mM citrate buffer, pH6.0, for 20mins is required for the staining of formalin/paraffin sections. Other applications have not been tested. Optimal dilutions should be determined by end users. . Add 0.2ml of distilled water will yield a concentration of 500ug/ml.

**Isotype**

Rabbit IgG

**Clonality**

Polyclonal

**MW**

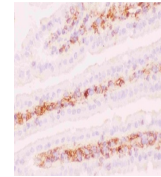
141479 MW

**Uniprot ID**
**P08183**
**Sensitivity**

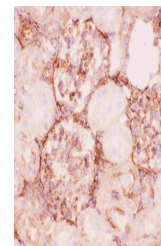
1pg/ml

**Expiration Date**

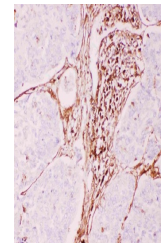
12 months from date of receipt.



IHC(F)  
analysis of  
Mouse  
Intestine  
Tissu...



IHC(F)  
analysis of  
Rat Kidney  
Tissue usi...



IHC(P)  
analysis of  
Human Lung  
Cancer Tis...