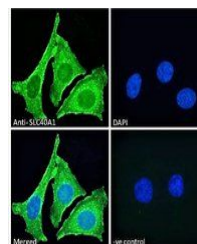


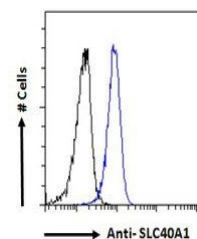
Product Datasheet

SLC40A1 antibody (orb233663)

Description	Goat polyclonal antibody to SLC40A1
Species/Host	Goat
Reactivity	Human
Conjugation	Unconjugated
Tested Applications	ELISA, FC, IF
Target	SLC40A1 (aa245-259)
Preservatives	Supplied at 0.5 mg/ml in Tris saline, 0.02% sodium azide, pH 7.3 with 0.5% bovine serum albumin. Aliquot and store at -20°C. Minimize freezing and thawing.
Storage	Aliquot and store at -20°C. Minimize freezing and thawing.
Note	For research use only
Application notes	WB: Approx 55kDa band observed in Human Breast cancer lysates. Recommended concentration: 1-3 µg/ml.
Protein Sequence	ELKQLNLHKDTEPKP
Clonality	Polyclonal
MW	62.5
Entrez	30061
Dilution Range	ELISA: 1:128000, WB: 1-2 µg/ml, IHC-P: 10ug/ml
Expiration Date	12 months from date of receipt.



Immunofluorescence analysis of paraforma...



Flow cytometric analysis of paraforma...