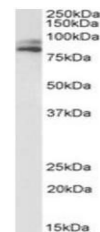


## Product Datasheet

### VPS16 antibody (orb233646)

<b>Description</b>	Goat polyclonal antibody to VPS16
<b>Species/Host</b>	Goat
<b>Reactivity</b>	Bovine, Canine, Human, Mouse, Porcine, Rat
<b>Conjugation</b>	Unconjugated
<b>Tested Applications</b>	ELISA, WB
<b>Target</b>	VPS16
<b>Preservatives</b>	Supplied at 0.5 mg/ml in Tris saline, 0.02% sodium azide, pH 7.3 with 0.5% bovine serum albumin. Aliquot and store at -20°C. Minimize freezing and thawing.
<b>Storage</b>	Aliquot and store at -20°C. Minimize freezing and thawing.
<b>Note</b>	For research use only
<b>Application notes</b>	ELISA: antibody detection limit dilution 1:128000.WB: Approx 95+80kDa band observed in lysates of cell line HepG2 and 95kDa in Mouse Spleen (calculated MW of 94.7kDa according to NP_072097.2 and 78.3kDa according to NP_536338.1). Recommended concentration: 1-3µg/ml.
<b>Protein Sequence</b>	CYKVQKDVSEDED
<b>Clonality</b>	Polyclonal
<b>MW</b>	94.7; 78.3
<b>Entrez</b>	<a href="#">64601</a>
<b>Dilution Range</b>	ELISA: 1:128000, WB: 1-3 µg/ml
<b>Expiration Date</b>	12 months from date of receipt.



Western blot analysis of HepG2 lysate US...



Western blot analysis of Mouse Spleen ly...