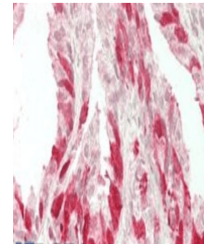


Product Datasheet

NELL2 antibody (orb233633)

Description	Goat polyclonal antibody to NELL2
Species/Host	Goat
Reactivity	Bovine, Canine, Human, Mouse, Porcine, Rat
Conjugation	Unconjugated
Tested Applications	ELISA, IHC
Target	NELL2
Preservatives	Supplied at 0.5 mg/ml in Tris saline, 0.02% sodium azide, pH 7.3 with 0.5% bovine serum albumin. Aliquot and store at -20°C. Minimize freezing and thawing.
Storage	Aliquot and store at -20°C. Minimize freezing and thawing.
Note	For research use only
Application notes	This antibody is expected to recognize all reported isoforms WB: Preliminary experiments gave an approx 80kDa band in Human Brain lysates after 0.5 µg/ml antibody staining
Protein Sequence	DPCQADTIRNDITKT
Clonality	Polyclonal
MW	96.9; 91.3; 91.2; 94.2
Entrez	4753
Dilution Range	ELISA: 1:64000, WB: 0.5 µg/ml, IHC-P: 5 µg/ml
Expiration Date	12 months from date of receipt.



Immunohistochemical staining of Human Prostate