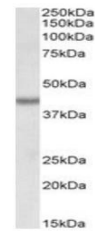


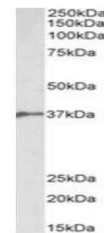
Product Datasheet

BMI1 antibody (orb233612)

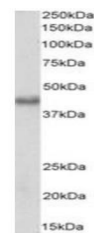
Description	Goat polyclonal antibody to BMI1
Species/Host	Goat
Reactivity	Canine, Human, Mouse, Porcine
Conjugation	Unconjugated
Tested Applications	ELISA, IHC, WB
Target	BMI1 (aa237-251)
Preservatives	Supplied at 0.5 mg/ml in Tris saline, 0.02% sodium azide, pH 7.3 with 0.5% bovine serum albumin. Aliquot and store at -20°C. Minimize freezing and thawing.
Storage	Aliquot and store at -20°C. Minimize freezing and thawing.
Note	For research use only
Application notes	ELISA: antibody detection limit dilution 1:128000.WB: Approx 40kDa band observed in nuclear lysates of cell lines K562 and NIH3T3 (calculated MW of 36.9kDa according to NP_005171.4). This band corresponds to earlier findings in literature with different antibodies (Chagraoui et al, Genes Dev. 2006 Aug 1;20(15):2110-20. PMID: 16882984). Recommended concentration: 0.1-0.3µg/ml. Approx 37kDa band observed in Pig Bone Marrow lysates (calculated MW of 36.9kDa according to NP_001272900.1). Recommended concentration: 1-3µg/ml.
Protein Sequence	SHQRDGLTNAGELES
Clonality	Polyclonal
MW	36.9
Entrez	648
Dilution Range	ELISA: 1:128000, WB: 1-3 µg/ml, IHC-P: 5 µg/ml
Expiration Date	12 months from date of receipt.



Western blot analysis of K562 nuclear lysate...



Western blot analysis of Pig Bone Marrow...



Western blot analysis of NIH3T3 nuclear ...