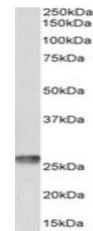


Product Datasheet

ATP6 antibody (orb233611)

Description	Goat polyclonal antibody to ATP6
Species/Host	Goat
Reactivity	Human
Conjugation	Unconjugated
Tested Applications	ELISA, WB
Target	MT-ATP6
Preservatives	Supplied at 0.5 mg/ml in Tris saline, 0.02% sodium azide, pH 7.3 with 0.5% bovine serum albumin. Aliquot and store at -20°C. Minimize freezing and thawing.
Storage	Aliquot and store at -20°C. Minimize freezing and thawing.
Note	For research use only
Application notes	WB: Approx 26kDa band observed in Human Heart, Colon and Ileum lysates. Recommended concentration: 0.1-0.3 µg/ml.
Protein Sequence	PTSKYLINNRLITTQ
Clonality	Polyclonal
MW	24.8
Entrez	4508
Dilution Range	ELISA: 1:64000, WB: 0.1-0.3 µg/ml
Expiration Date	12 months from date of receipt.



Western blot analysis of Human Heart lys...