

Product Datasheet

Recombinant human ErbB2 / Her2 protein, C-His-Avi (HEK293), Biotin conjugated (orb2328755)

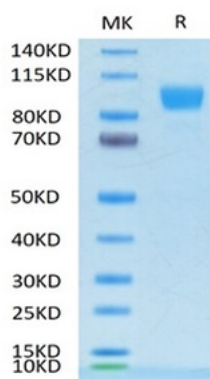
Description	Recombinant human ErbB2 / Her2 protein, C-His-Avi (HEK293), Biotin conjugated
Endotoxins	< 1.0 EU/μg as determined by LAL
Target	Receptor tyrosine-protein kinase erbB-2
Preservatives	Lyophilized from 0.22um filtered solution in PBS (pH7.4) with 5mM DTT. Normally 5% trehalose is added as protectant before Lyophilization.
Concentration	□0.5 mg/ml
Storage	Stored at -70°C or -20°C. Avoid repeated freeze/thaw cycles.
Tag	C-His-Avi
Note	For research use only
Application notes	Centrifuge tubes before opening. Reconstituting to a concentration more than 100 μg/ml is recommended. Dissolve the lyophilized protein in distilled water.
Protein Sequence	23-652/1255
Purity	> 95% as determined by Tris-Bis PAGE; > 95% as determined by SEC-HPLC
MW	Due to glycosylation, the protein migrates to 80-100 kDa based on Tris-Bis PAGE result.
Expiration Date	6 months from date of receipt.

Biorbyt Ltd.

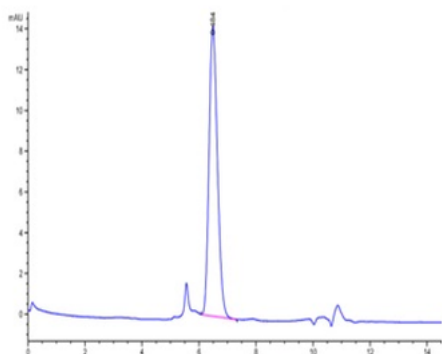
7 Signet Court, Swann's Road,
Cambridge, CB5 8LA, United Kingdom
Email: info@biorbyt.com, support@biorbyt.com
Phone: [+44 \(0\) 1223 859-353](tel:+44(0)1223859353) | Fax: [+1 \(415\) 651-8558](tel:+1(415)6518558)

Biorbyt LLC.

68 TW Alexander Drive,
Durham, NC, 27713, United States
Email: info@biorbyt.com, support@biorbyt.com
Phone: [+1 \(415\) 906-5211](tel:+1(415)9065211) | Fax: [+1 \(415\) 651-8558](tel:+1(415)6518558)



Biotinylated Human ErbB2/Her2 Protein on Tris-Bis PAGE under reduced condition. The purity is greater than 95%.



The purity of Biotinylated Human ErbB2/Her2 Protein is greater than 95% as determined by SEC-HPLC.

Biorbyt Ltd.

7 Signet Court, Swann's Road,
Cambridge, CB5 8LA, United Kingdom
Email: info@biorbyt.com, support@biorbyt.com
Phone: [+44 \(0\) 1223 859-353](tel:+44(0)1223859353) | Fax: [+1 \(415\) 651-8558](tel:+1(415)6518558)

Biorbyt LLC.

68 TW Alexander Drive,
Durham, NC, 27713, United States
Email: info@biorbyt.com, support@biorbyt.com
Phone: [+1 \(415\) 906-5211](tel:+1(415)9065211) | Fax: [+1 \(415\) 651-8558](tel:+1(415)6518558)