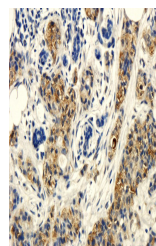


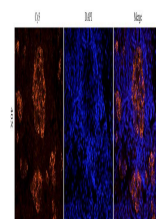
Product Datasheet

CD90 antibody (orb229832)

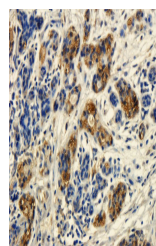
Description	CD90 antibody
Species/Host	Rabbit
Reactivity	Human, Mouse, Rat
Conjugation	Unconjugated
Tested Applications	ELISA, ICC, IF, IHC-P
Immunogen	KLH conjugated synthetic peptide derived from human CD90. Please contact us for the exact immunogen sequence. The peptide is available as orb374844.
Target	CD90
Form/Appearance	10 mM PBS, 0.02% sodium azide
Concentration	- 100 µg (in 200 µl): 0.5 mg/ml- 200 µg (in 400 µl): 0.5 mg/ml
Storage	Store at 4°C for up to two weeks. For long term storage, aliquot and store at -20°C, avoid freeze/thaw cycles
Note	For research use only
Isotype	IgG
Clonality	Polyclonal
Purity	Polyclonal antibodies are purified by peptide affinity chromatography
Uniprot ID	P01831 , P01830 , P04216
NCBI	31 , 006279 , 21 , 006288
Entrez	7070
Dilution Range	IF/ICC: 1:100, IHC-P:1:100
Expiration Date	12 months from date of receipt.



IHC-P image of human breast cancer tissue...



IF analysis of human breast cancer tissue...



IHC-P staining of human breast cancer ti...