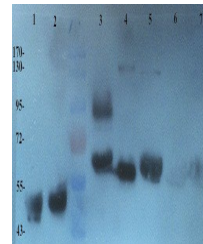


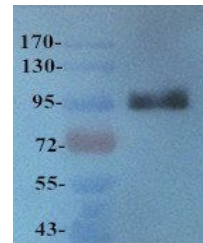
Product Datasheet

Integrin alpha 4 antibody (orb229830)

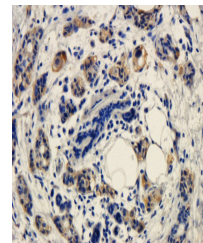
Description	Integrin alpha 4 antibody
Species/Host	Rabbit
Reactivity	Bovine, Equine, Human, Mouse, Rat
Conjugation	Unconjugated
Tested Applications	ELISA, ICC, IF, IHC-P, WB
Immunogen	KLH conjugated synthetic peptide derived from human Integrin alpha 4. Please contact us for the exact immunogen sequence. The peptide is available as orb374845.
Target	Integrin alpha 4
Form/Appearance	10 mM PBS, 0.02% sodium azide
Concentration	- 100 µg (in 200 µl): 0.5 mg/ml- 200 µg (in 400 µl): 0.5 mg/ml
Storage	Store at 4°C for up to two weeks. For long term storage, aliquot and store at -20°C, avoid freeze/thaw cycles.
Note	For research use only
Isotype	IgG
Clonality	Polyclonal
Purity	Polyclonal antibodies are purified by peptide affinity chromatography
MW	150 kDa
Uniprot ID	Q6PJE7 , Q00651 , D3ZMQ3
Dilution Range	WB: 2 µg/ml, IHC-P:1:100, IF/ICC: 1:100
Expiration Date	12 months from date of receipt.



Western blot analysis of human breast ca...



Western blot analysis of rat uterus tiss...



Immunohistochemical staining of paraffin...