

---

## Product Datasheet

### beta 1 Adrenergic Receptor antibody (orb229828)

**Description**

beta 1 Adrenergic Receptor antibody

**Species/Host**

Rabbit

**Reactivity**

Canine, Human, Mouse, Porcine, Rat

**Conjugation**

Unconjugated

**Tested**

ELISA, ICC, IF, IHC-P, WB

**Applications**
**Immunogen**

KLH conjugated synthetic peptide derived from human beta 1 Adrenergic Receptor. Please contact us for the exact immunogen sequence. The peptide is available as orb374842.

**Target**

beta 1 Adrenergic Receptor

**Form/Appearance**

10 mM PBS, 0.02% sodium azide

**Concentration**

- 100 µg (in 200 µl): 0.5 mg/ml- 200 µg (in 400 µl): 0.5 mg/ml

**Storage**

Store at 4°C for up to two weeks. For long term storage, aliquot and store at -20°C, avoid freeze/thaw cycles.

**Note**

For research use only

**Application notes**

This antibody against Human, Mouse, Rat, Dog, Pig

**Isotype**

IgG

**Clonality**

Polyclonal

**Purity**

Polyclonal antibodies are purified by peptide affinity chromatography

**MW**

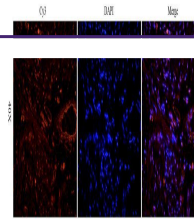
55 kDa

**Uniprot ID**
[P08588](#), [P34971](#), [P18090](#)
**NCBI**
[21](#), [000675](#), [000684](#), [11](#)
**Entrez**
[153](#)
**Dilution Range**

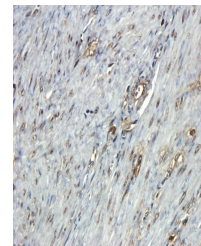
IF/ICC: 1:100, IHC-P:1:100, WB:1:100-500

**Expiration Date**

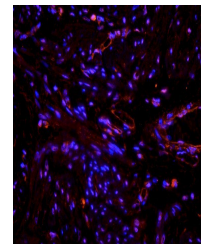
12 months from date of receipt.



IF image of human endometrial cancer tis...



IHC-P staining of human endometrial canc...



Immunofluorescence image of human endome...