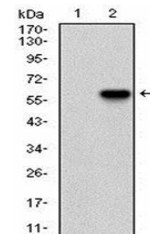


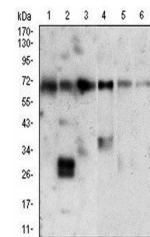
Product Datasheet

XRCC6 Antibody (orb229825)

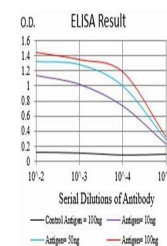
Description	Mouse monoclonal antibody to XRCC6
Species/Host	Mouse
Reactivity	Human
Conjugation	Unconjugated
Tested Applications	ELISA, FC, ICC, IHC, WB
Immunogen	Purified recombinant fragment of human XRCC6 (AA: 6-214) expressed in E. Coli.
Preservatives	Purified antibody in PBS with 0.05% sodium azide.
Concentration	1mg/ml
Storage	Maintain refrigerated at 2-8°C for up to 2 weeks. For long term storage store at -20°C in small aliquots to prevent freeze-thaw cycles.
Note	For research use only
Isotype	Mouse IgG1
Clonality	Monoclonal
MW	69.8kDa
Entrez	2547
Dilution Range	WB: 1/500 - 1/2000; IHC: 1/200 - 1/1000; ICC: 1/200 - 1/1000; RCM: 1/200 - 1/400; ELISA: 1/10000
Expiration Date	12 months from date of receipt.



Western blot analysis of HEK293 using XR...



Western blot analysis of HeLa (Lane1), P...



ELISA Black line: Control Antigen (100 n...