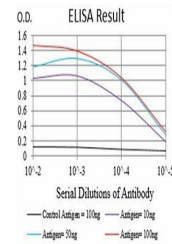


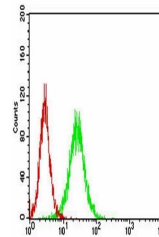
Product Datasheet

RBL2 Antibody (orb229817)

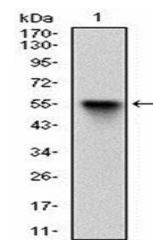
Description	Mouse monoclonal antibody to RBL2
Species/Host	Mouse
Reactivity	Human
Conjugation	Unconjugated
Tested Applications	ELISA, FC
Immunogen	Purified recombinant fragment of human RBL2 (AA: 939-1139) expressed in E. Coli.
Preservatives	Purified antibody in PBS with 0.05% sodium azide.
Concentration	1mg/ml
Storage	4°C; -20°C for long term storage. Avoid freeze/thaw cycles.
Note	For research use only
Isotype	Mouse IgG1
Clonality	Monoclonal
MW	128.4kDa
Entrez	5934
Dilution Range	RCM: 1/200 - 1/400; ELISA: 1/10000
Expiration Date	12 months from date of receipt.



ELISA Black line: Control Antigen (100 n...



Flow cytometric analysis of HeLa cells u...



Western blot analysis of human recombina...