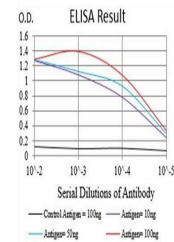


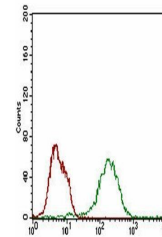
Product Datasheet

BAD Antibody (orb229798)

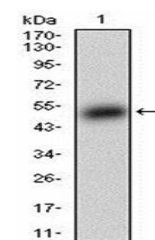
Description	Mouse monoclonal antibody to BAD
Species/Host	Mouse
Reactivity	Human
Conjugation	Unconjugated
Tested Applications	ELISA, FC, WB
Immunogen	Purified recombinant fragment of human BAD (AA: FULL(1-168)) expressed in E. Coli.
Preservatives	Purified antibody in PBS with 0.05% sodium azide.
Concentration	1mg/ml
Storage	Maintain refrigerated at 2-8°C for up to 2 weeks. For long term storage store at -20°C in small aliquots to prevent freeze-thaw cycles.
Note	For research use only
Isotype	Mouse IgG1
Clonality	Monoclonal
MW	18.4kDa
Entrez	572
Dilution Range	WB: 1/500 - 1/2000; RCM: 1/200 - 1/400; ELISA: 1/10000
Expiration Date	12 months from date of receipt.



ELISA Black line: Control Antigen (100 n... n...



Flow cytometric analysis of MCF-7 cells ...



Western blot analysis of human recombina...